

PICTORIAL SUPPLEMENT  
TO THE HISTORY OF  
OVERBROOK  
PRESBYTERIAN CHURCH

Philadelphia, Pa.

November 1963

*This "Pictorial Supplement" is respectfully dedicated to our minister Dr. Robert T. Williamson, whose leadership of our people in witness and community service is a fitting example of the stewardship of God's Word. It is issued with the kind permission of the Session by the Board of Trustees and the cost has been defrayed by a member of the congregation who wishes to remain anonymous. It has been prepared by a committee of the Board of Trustees with the generous assistance of the Pastor. The committee appointed by the Board's President, James H. Gillon, consisted of Arthur E. De Simone, V. K. Simpson, and Haig H. Pakradooni, Jr., Chairman.*

PICTORIAL SUPPLEMENT  
TO THE HISTORY OF  
OVERBROOK PRESBYTERIAN CHURCH

NOVEMBER 1963

*Now to Him who by the power at work within us is able to do far more abundantly than all that we ask or think, to Him be glory in the Church and in Christ Jesus to all generations, for ever and ever. Amen.*

*(Ephesians 3:20-21)*

Seventy-five years is a long time. As we approach this milestone we become mindful of and challenged by our indebtedness to God and to those whose faith and labors have given us this great church. It is a part of the lives of Overbrook people of the past and the present.

The history of Overbrook Presbyterian Church has been carefully prepared and presented in an attractive volume entitled *The Place Where Thy Glory Dwells*. This volume, made available to the members of the church anonymously by a member of the congregation, was printed in 1959 and this supplement seeks to bring the picture story up-to-date as a prelude to the celebration of our Seventy-fifth Anniversary.

Dr. Robert T. Williamson began his ministry in Overbrook on October 15, 1959. One of the primary challenges which he accepted was to lead us in a program which would remodel and renovate our church facilities. Studies had been made prior to his coming which revealed the need to bring our church plant up-to-date but as time went on under his leadership more extensive and expensive plans developed which, in due season, became a reality.

Approximately \$200,000 was raised in a Special Building Fund Campaign and the Overbrook family rallied to meet the challenge. The excellence of the initial structure provided by those who preceded us made a matching of the stone costly and the needs of the church were so great that it was necessary to exceed the pledged amount by approximately \$60,000. This included the purchase of a new manse in Gladwyne and the demolition of the old manse next to the church in order to provide an additional parking area. Of special interest were the enlargement and modernization of the kitchen, the provision of a new Chapel, a Library-Lounge and administration wing which facility unified the offices which were previously scattered. This new air-conditioned office area provides excellent studies for our ministers and offices for our staff.

Much needed Nursery and Rest Room facilities were created and the Christian Education Building and Church Building were joined by a special combination passageway and stairwell which affords easy access from the Sanctuary to the Wistar Morris Room for Coffee Hours, etc. A

sunken garden entrance between the two buildings leads to a bright and cheerful basement Kindergarten Room where overhanging pipes have been removed and a modern classroom installed.

Special gifts and memorials made possible furnishings in the Chapel and Library-Lounge, the new large illuminated Bulletin Board in front of the church and new tables and chairs for the Church School and Fellowship Hall.

A new cloistered entrance leading from the new parking lot where the old manse once stood adds to the beauty of the north side of the building and the new administration wing. A new entrance from the old parking lot affords direct access and is so designed that one can proceed through a series of arches all the way to the Sanctuary. Through the kindness of one donor the interiors of both the Sanctuary and the Church House were painted.

Dr. Williamson's leadership extends to so many parts of our church life that it would be redundant to mention all phases of it. One of the many innovations he has brought about is our informative church paper, *The Overbrook Presbyterian*.

The following pictures tell in part what we have been endeavoring to depict in words.



Cloister entrance to the new administration wing.



From the inside of the cloister entrance looking out to the new parking lot.



Easy access through new entrance from old parking lot.





Beautifully matched stone structure joins the two buildings.



Worshippers leaving the Sanctuary stop to view the new Chapel.



A side view of the new Chapel.



The lovely trees were preserved even to the extent of building the service yard wall around a walnut tree.



One of the several arches in the cloister entrance.



Kindergarten children of the Church School enjoy their new room off the sunken garden.



Church School Kindergarten children enter their new Kindergarten Room by way of the sunken garden entrance.

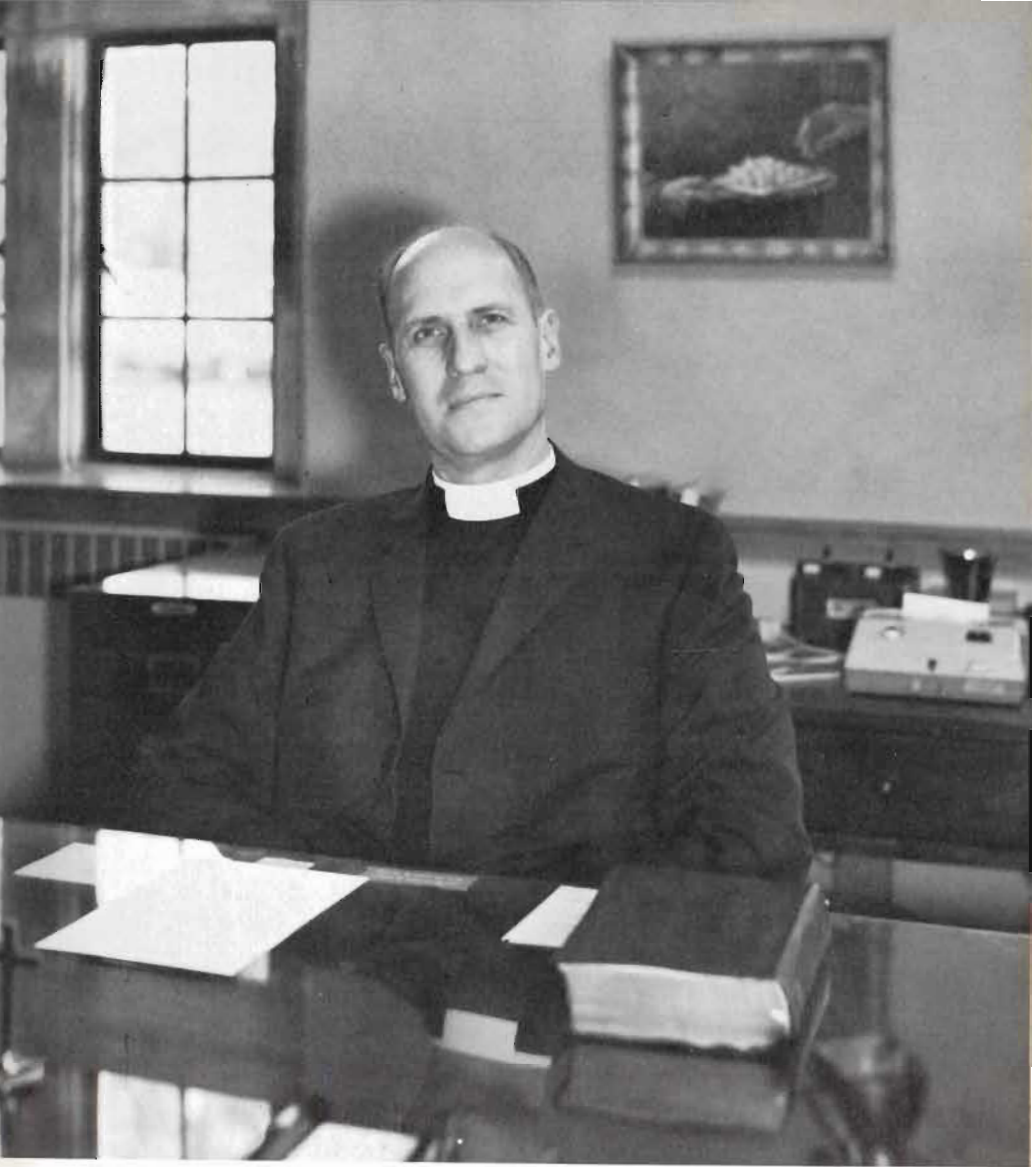


Crib facilities for the little ones and toys for toddlers plus a student nurse make the Nursery facilities complete.





The new double door exit from the Sanctuary affords easy access to the Church House.



Dr. Williamson at his desk in his new study.



Our Seminarian Assistant, Peter Wise, teaches the Junior Church in the Kindergarten Room after their worship experience each Sunday in the Sanctuary.



A portion of the new Kitchen is used by our ladies to prepare refreshments for the Coffee Hour each Sunday.



The Senior Highs enjoy the comfort and fellowship of the new Library-Lounge.



The Junior Choir in dress rehearsal in the new Chapel.



The Reverend John C. Taylor, Assistant Minister.